



*A vision...*

Safe Saskatchewan Inc. is a registered not-for-profit organization led by a consortium of public, private, cooperative, and non-profit sector [strategic partners](#). Its vision is *an injury-free Saskatchewan where safe lifestyles influence how we live, work and play*. Its mission is *working together to eliminate unintentional injuries in Saskatchewan*.

Safe Saskatchewan and its partners believe . . .

- All injuries are predictable and preventable
- Informed people are more likely to lead healthy and safe lifestyles
- Some populations are more at risk than others
- Injury prevention is everyone's responsibility
- Personal health and safety is a right
- Health and safety is a personal responsibility requiring individual commitment
- Demonstrated leadership commitment is integral to transforming culture



**among the worst in Canada\***



*A vision...*



**105,584** emergency room visits annually or **289 per day**

**9,322** injury hospitalizations every year or **26 per day**

**2,142** permanent disabilities per year or **6 per day**

**525** deaths per year or **1.4 per day**

\*Parachute. (2015). [The Cost of Injury in Canada](#). Parachute: Toronto, ON

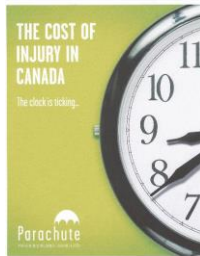




## Saskatchewan injury rates

	Workplace	Off-the-Job*
Injury Rate	1	<b>2X</b>
Permanent Disability Rate	1	<b>4X</b>
Death Rate	1	<b>5X</b>

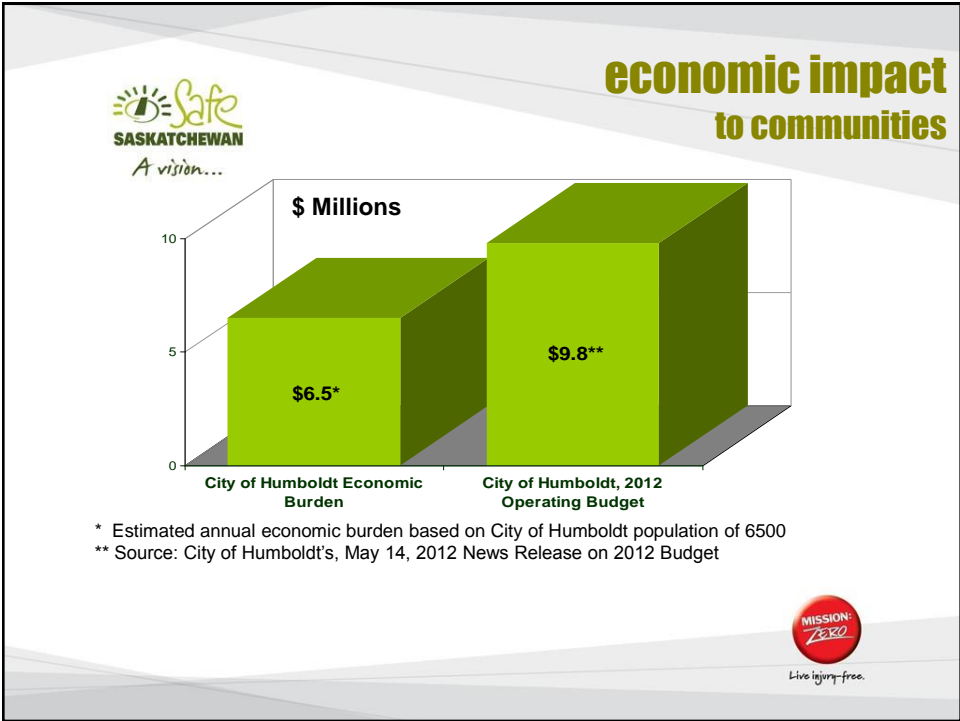
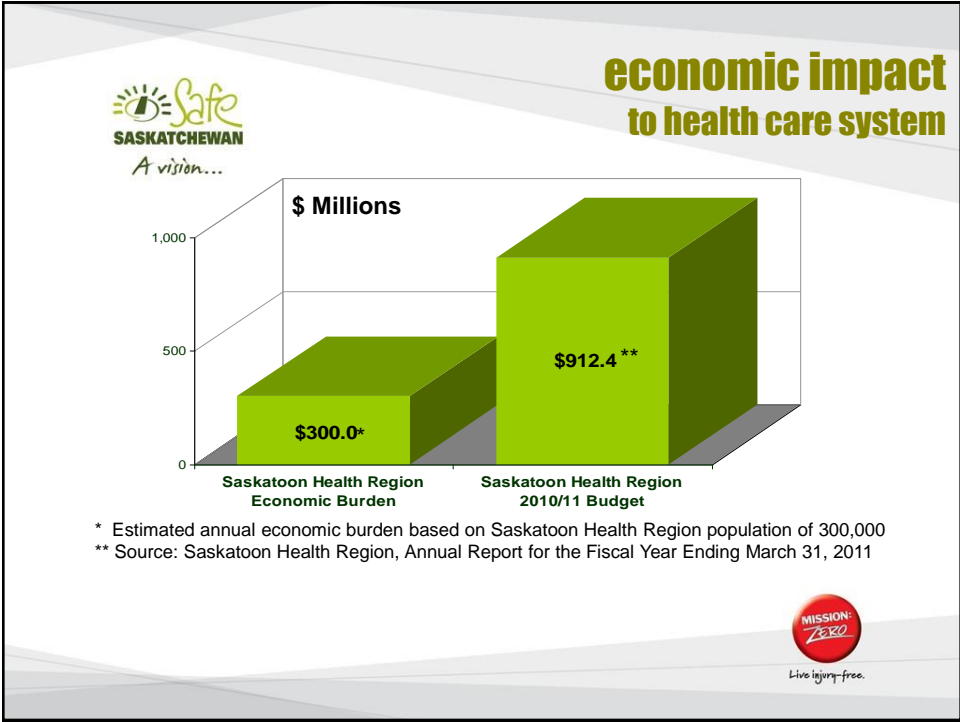
\* There is twice the chance that working class Saskatchewan people will have an injury after they're done work, four times the chance they will suffer a permanent disability, and five times the chance they will die from a preventable injury after 5:00 pm.



Every year preventable unintentional injuries create a drain of **\$1 billion\*** on the Saskatchewan economy

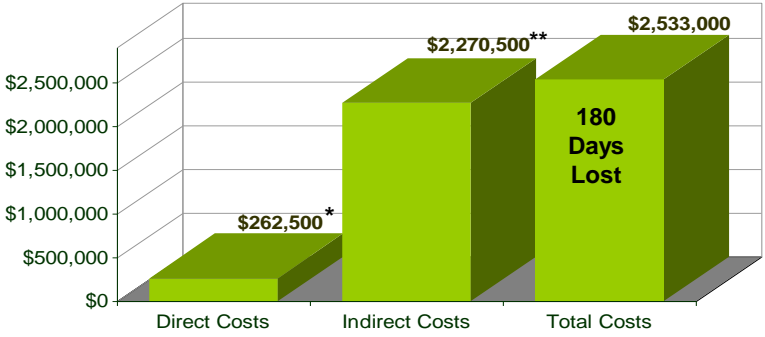
\* Parachute's, "[The Cost of Injury in Canada](#)" report cites \$918 million (2010) as the annual cost to the Saskatchewan economy. When this amount is indexed to today's dollar value and when workers' compensation, auto and other private disability insurer costs are added, **\$1 billion is a conservative estimate** of the annual cost of preventable injuries to Saskatchewan's economy. This is the equivalent of \$1000 annual economic burden per Saskatchewan resident.







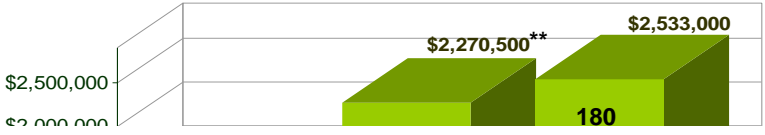
### example critical workplace injury



\*Direct injury, investigation and legal costs  
 \*\* Indirect loss of business, impact to reputation



### example critical workplace injury



**\$37.8 MILLION** IN ADDITIONAL SALES  
 NEEDED TO COVER \$2.3 MILLION IN INDIRECT COSTS  
 AT A PROFIT MARGIN OF 6%

\*Direct injury, investigation and legal costs  
 \*\* Indirect loss of business, impact to reputation





U.S. National Safety Council:  
*"Off-the-job injuries  
are up to  
**8 times more costly**  
than workplace injuries."*



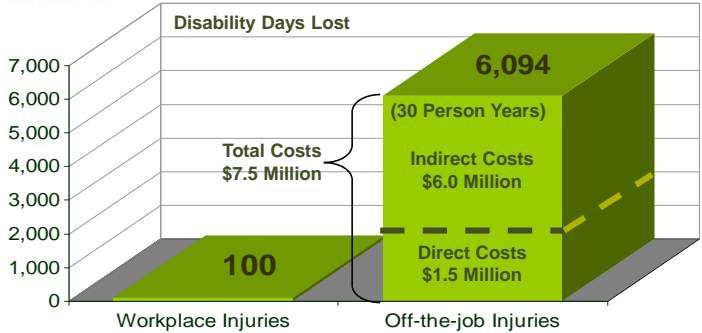
**experience**

- Potash Business Unit (PBU) includes 4 mines in Saskatchewan, 1 in New Mexico and 1 in Michigan
- 2500 workers in total
- Based on fiscal year, 2006/07





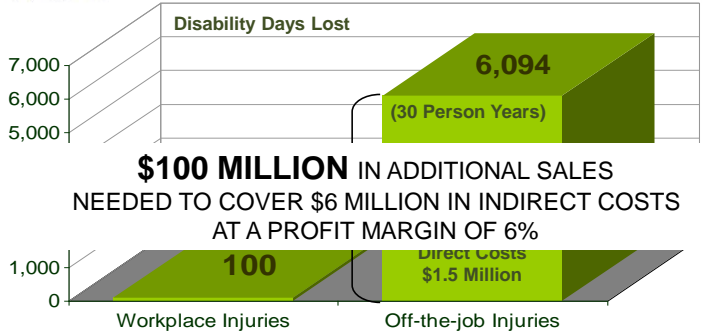
# experience example of the economic burden to industry



**FINANCIAL IMPACT: \$1230 per day of disability!**



# experience example of the economic burden to industry



**\$100 MILLION** IN ADDITIONAL SALES  
NEEDED TO COVER \$6 MILLION IN INDIRECT COSTS  
AT A PROFIT MARGIN OF 6%

**FINANCIAL IMPACT: \$1230 per day of disability!**





Centers for Disease Control and Prevention  
 CDC 24/7: Saving Lives, Protecting People™

- ✓ \$1 spent on smoke alarms **saves \$69**
- ✓ \$1 spent on bicycle helmets **saves \$29**
- ✓ \$1 spent on child safety seats **saves \$32**
- ✓ \$1 spent on road improvements **saves \$3**



## sustainable advantage

“The most important asset you will ever have,  
 and the one that appreciates the most,  
 is the human capital you hire, develop and retain.”

~ W. Brett Wilson





## strategic priority\*

1. **Influence Cultural Transformation:**  
Facilitate and coordinate strategies and activities aimed at transforming the Saskatchewan culture and positioning injury prevention as a core value.

Community Safety Education Strategy

Saskatchewan Health & Safety Leadership Charter

Endorsement, Adoption and Use of



Off-the-Job Health & Safety Strategy



Live injury-free.

\* Safe Saskatchewan Strategic Priorities: <http://safesask.com/strategic-priorities/>



Live injury-free.

Improve the lives of people in Saskatchewan

Enhance the economic environment for business

Save millions of dollars in health and social costs!



Live injury-free.





Gord Moker  
Chief Executive Officer  
Safe Saskatchewan Inc.  
306.352.3810  
gmoker@safesask.com



[safesask.com](http://safesask.com)

